

OTTOFLEX® Multifunctional corner

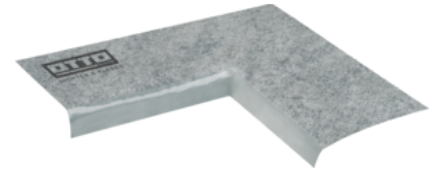
SPECIAL

The universal multifunctional corner

Multifunctional corner fully fabric reinforced on both sides with special elastomer sealing layer

For indoor application

OFMFE



Characteristics

- ▶ Secure connection with OTTOFLEX® protective coating / slurry seal coating / sealing strip/ sealing and decoupling strip
- ▶ Polyethylene film with polypropylene fleece on both sides and self-adhesive strips of butyl rubber
- ▶ Optimal for special installation situations with floor-level shower trays
- ▶ Self-adhesive strips on one side for easy workability
- ▶ Perfect match for OTTOFLEX® bath edge sealing tape
- ▶ Extremely elastic and tear resistant

Fields of application

- ▶ Composite sealing in moisture-prone rooms and wet rooms underneath ceramic coverings and natural stone using the thin bed method
- ▶ Sealing between the shower trays and floor-level shower trays in the transition area of the wall and floor, as well as floor offset of the shower board area

Standards and tests

- ▶ Complies with the water action categories W0-I, W1-I and W2-I in accordance with DIN 18534
- ▶ According to the moisture resistance classes according to ZDB and abP
- ▶ Complies with the stress categories W1, W2, W3 and W4 in accordance with ÖNORM B 3407
- ▶ EMICODE® EC 1 Plus - very low emission
- ▶ French VOC-emission class A+

Technical properties

Length of the contact surface [mm]	~ 247
Width of the contact surface [mm]	~ 100
Bar height [mm]	~ 25
Total thickness [mm]	~ 1,3
Thickness (without butyl strips) [mm]	~ 0,7
Width of the butyl strip [mm]	~ 18
Temperature resistance from/to [°C]	- 5 / + 60
Shelf life at 23 °C/50 % RH [months]	12 ¹

1) from production

These data are not suitable for the issue of specifications. Please contact OTTO-CHEMIE before issuing specifications.

Application information

Bond the OTTOFLEX® multifunctional corner with 5 cm overlap on the bath edge sealing tape with the butyl strip onto the

Hermann Otto GmbH
 Krankenhausstr. 14 | 83413 Fridolfing, Germany
 ☎ +49 8684 908-0 | @ info@otto-chemie.de
 www.otto-chemie.com

💡 **Application advice**
 ☎ +49 8684 908-4300
 @ tae@otto-chemie.de

OTTO
 CHEMIE
SEALING & BONDING

shower tray edge cleaned with OTTO Cleaner T and insert the shower tray into the provided floor structure. Bond the sealing corners and sealing tapes with OTTOCOLL® M 500 or with OTTOCOLL® M 595 onto the substrate and bond the overlapping areas with OTTOCOLL® M 500 or OTTOCOLL® M 595 on the OTTOFLEX® sealing strip and seal or apply OTTOFLEX® slurry seal coating or OTTOFLEX® protective coating.

Due to the many possible influences during and after application, the customer always has to carry out trials first.

Packaging

Dimension (length x width)	Order unit (OU)	Packaging unit (PU)	Packaging	Order code
24,7 x 2,5 cm	1 piece	3 pieces	box	OFMFE

Disposal

Product residues can be disposed of along with industrial waste as mixed plastics. Packaging materials (cardboard boxes, foils) are recyclable and hence should be recycled.

Brand information

EMICODE® is a registered trademark of GEV e. V. (Düsseldorf, Germany)

Warranty information

The above information and our technical application advice, whether verbal, in writing or by means of tests, are provided to the best of our knowledge, but are non-binding, including with regard to any third-party property rights. The information in this publication does not exempt the processor from carrying out their own tests on our products with regard to their suitability for the intended processes and purposes. The application, use and processing of our products and the products manufactured on the basis of our technical application advice are beyond our control and are therefore the sole responsibility of the processor. If the application for which our products are used is subject to an official authorisation requirement, the user is responsible for obtaining these authorisations. We reserve the right to adapt the product to technical progress and new developments. For the rest, we refer to our General Terms and Conditions, in particular with regard to any liability for defects. You can find our GTC at www.otto-chemie.de.